



### PRODUCT OVERVIEW

Complete power storage system features long life LiFePO4 batteries with high performance battery management system (BMS) and PCS is suitable for a wide range of applications.

EV-EOV is a new generation of household energy storage system with a range of storage capacity options from 100Ah to 400Ah. The EV-EOV energy storage system's modular design, including power modules and battery expansion modules, can be easily combined into a system of any capacity required up to 20kWh.

### FEATURES

- Complete power storage system
- Integrated inverter/charger
- Scalable – from 1 to 4 batteries in parallel
- CAN/RS485/WiFi communications
- Intelligent BMS system
- Compact stylish design suitable for home environment
- Fully digital double closed-loop current & voltage control
- Optimized MPPT tracking
- Main power, PV and battery priority modes

### APPLICATIONS

- Emergency power supply
- Home backup storage
- Solar power storage
- Telecommunications backup power storage
- Data storage/UPS backup power storage
- Off-grid power

### Product Description

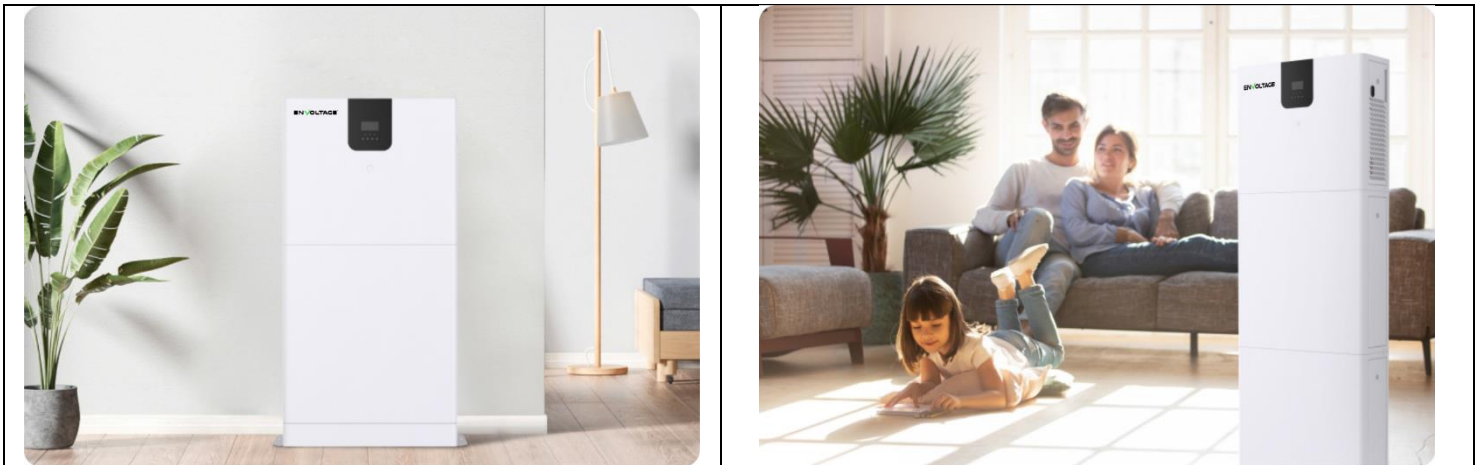
PART#	DESCRIPTION	VOLTAGE	CAPACITY	OUTPUT	WEIGHT
EV-EOV48-5.0S	100Ah 48v LiFePO4 Battery	51.2V	5.12kWh	100Ah	176.36 LBS
EV-EOV48-10.0S	200Ah 48v LiFePO4 Battery	51.2V	10.24kWh	200Ah	293.21 LBS
EV-EOV48-15.0S	300Ah 48v LiFePO4 Battery	51.2V	15.36kWh	300Ah	410 LBS
EV-EOV48-20.0S	400Ah 48v LiFePO4 Battery	51.2V	20.48kWh	400Ah	526.9 LBS

### Specifications

MODEL#	EV-EOV48-5.0S-S1	EV-EOV48-10.0S-S1	EV-EOV48-15.0S-S1	EV-EOV48-20.0S-S1
<b>BATTERY SPECIFICATIONS</b>				
Battery Modules	1	2	3	4
Battery Energy	5.12kWh	10.24kWh	15.36kWh	20.48kWh
Battery Capacity	100Ah	200Ah	300Ah	400Ah
Weight	176.36 LBS	293.21 LBS	410 LBS	526.9 LBS
Dimensions (L x D x H)	46.85" x 23.62" x 7.24"	70.86" x 23.62" x 7.24"	70.86" x 23.62" x 7.24" 27.16" x 23.62" x 7.24"	70.86" x 23.62" x 7.24" 51.18" x 23.62" x 7.24"
Battery Type	LiFePO4			
Battery Rated Voltage	51.2V			
Working Voltage Range	44.8 - 57.6V			
Maximum Charging Current	100A			
Maximum Discharge Current	100A			
DOD	80%			
Parallel Quantity	4			
<b>INVERTER SPECIFICATIONS</b>				
Inverter Model	SR-EOV48-5.0S-C1			
<b>PV CHARGING</b>				
Solar Charge Type	MPPT			
Maximum Output Power	5kW			
Charging Current Range	0 – 80A			
Operating Voltage Range	100 – 500V			
MPPT Voltage Range	120 – 450V			
<b>AC CHARGING</b>				
Maximum Charge Power	3150W			
AC Charging Current Range	0 – 60A			
Rated Input Voltage	220/230VAC			
Input Voltage Range	90 – 200VAC			
<b>AC OUTPUT</b>				
Rated Output Power	5kW			
Maximum Output Current	30A			
Frequency	50Hz			
Overload Current	35A			
<b>BATTERY INVERTER OUTPUT</b>				
Rated Output Power	5kW			
Maximum Peak Power	10kVA			
Power Factor	1			
Rated Output Voltage (VAC)	2300VAC			
Frequency	50Hz			

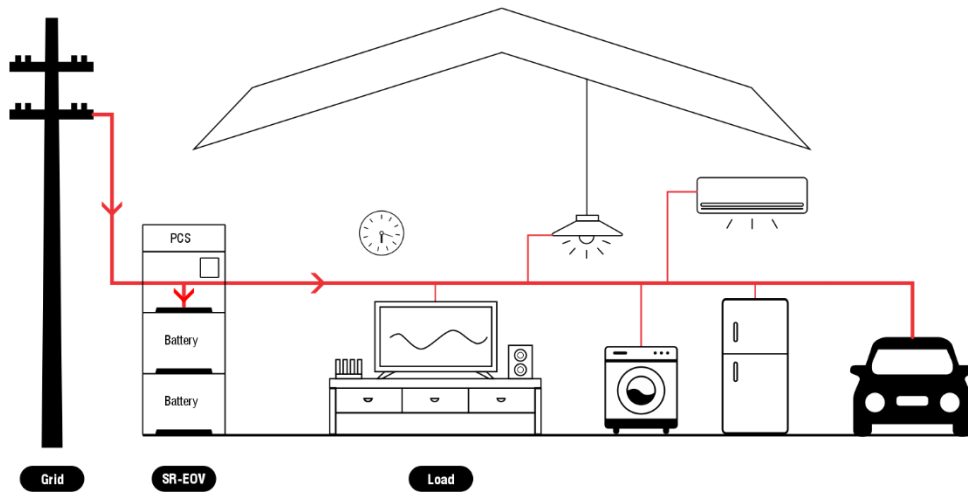
MODEL#	EV-EOV48-5.0S-S1	EV-EOV48-10.0S-S1	EV-EOV48-15.0S-S1	EV-EOV48-20.0S-S1
Auto Switch Period	< 15ms			
THD	< 3%			
<b>GENERAL DATA</b>				
Communication	RS485/CAN/Wi-Fi			
Storage Time / Temperature	6 Months @ 77°F   3 Months @ 95°F   1 Month @ 113°F			
Charging Temperature Range	0 - 113°F			
Discharging Temperature Range	14 - 113°F			
Operating Humidity	5% - 85%			
Nominal Operation Altitude	< 6,561ft			
Cooling Mode	Forced air			
Noise	60dB(A)			
Ingress Protection Rating	IP20			
Recommended Operating Environment	Indoor			
Installation Method	Vertical			
Certification	UN38.3,MSDS,EN55032,EN55024,EN61000-3-2,EN61000-3-3			

### Product Images

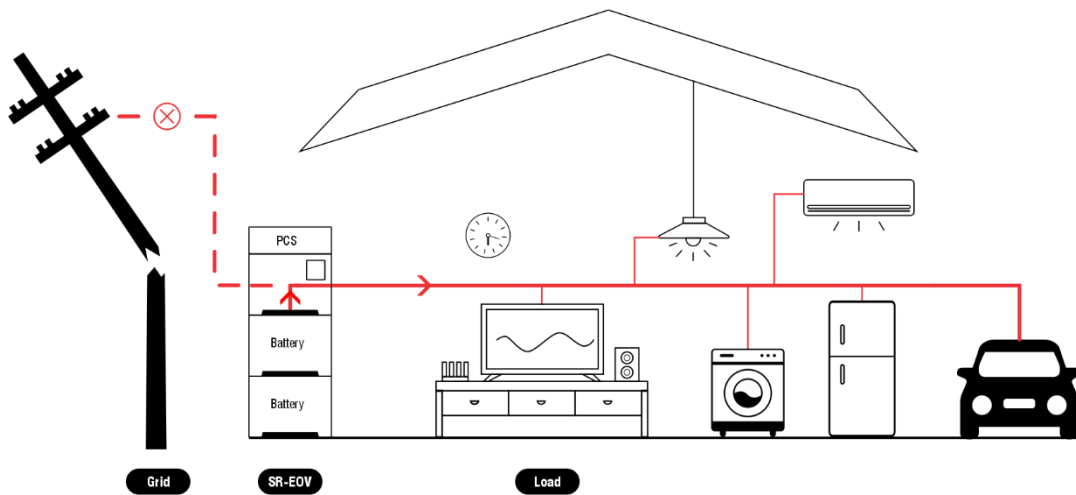


### Application Scenarios

#### Grid Power Storage

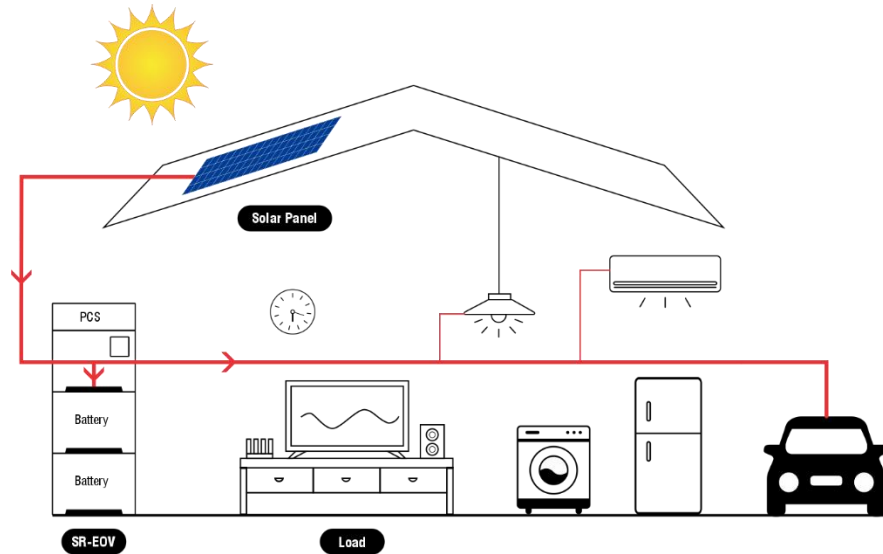


Power Storage Mode

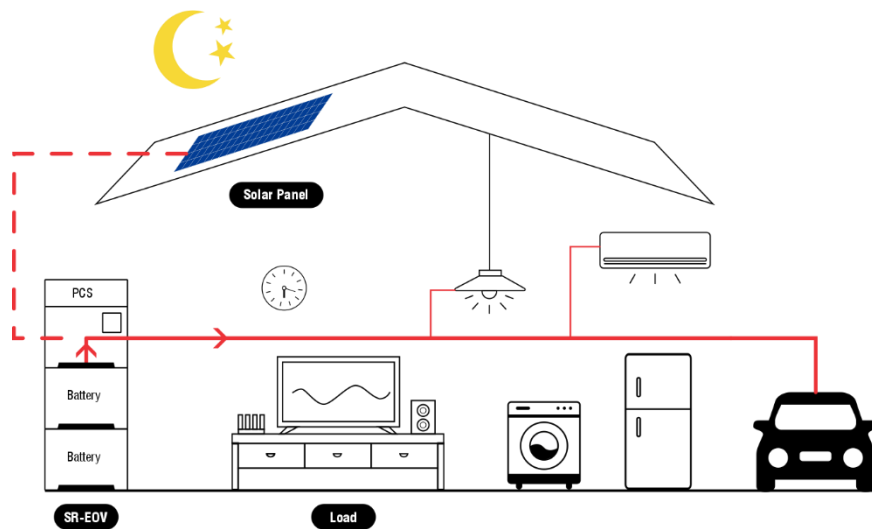


Emergency Power Discharge Mode

### Off-Grid Solar Power Storage

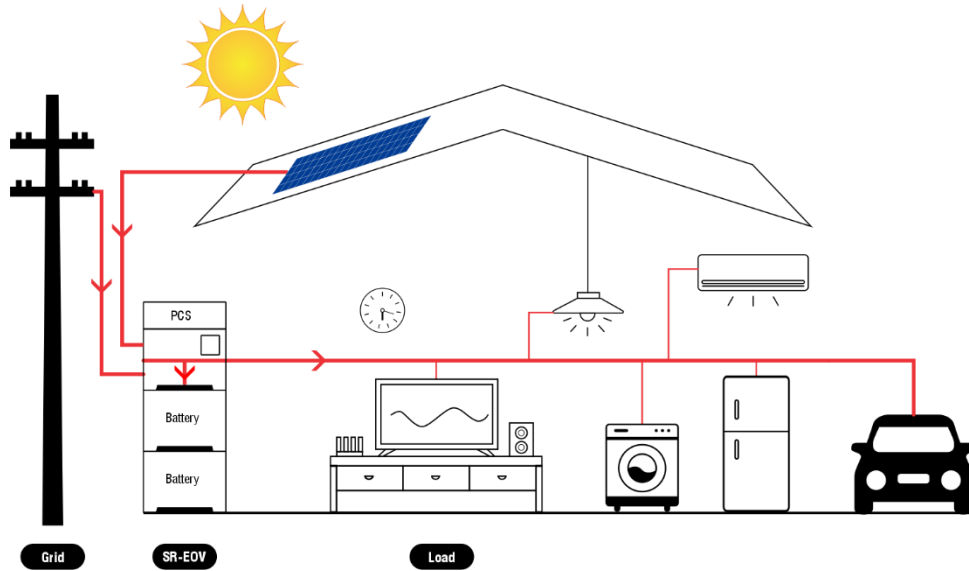


Power Storage Mode

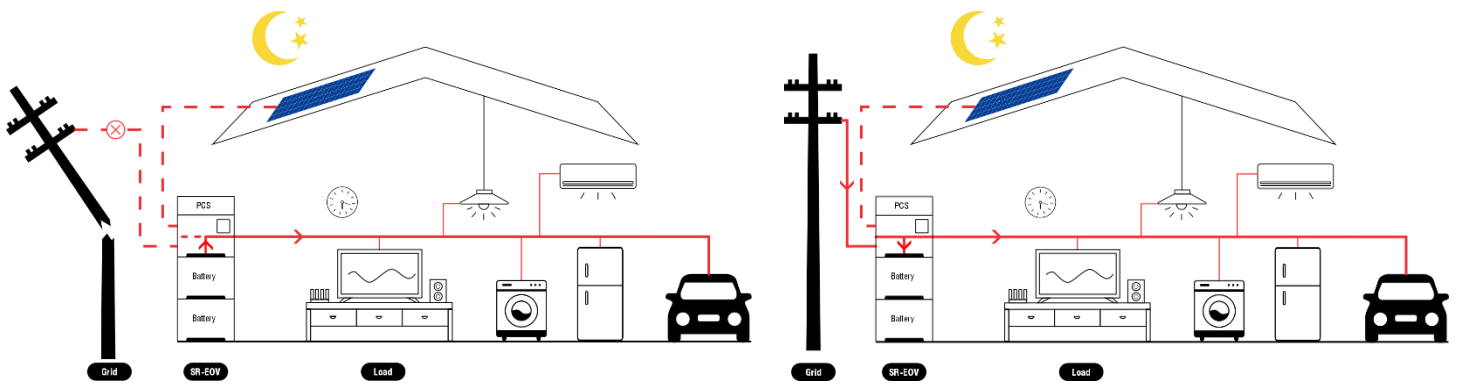


Power Discharge Mode

### Grid and Solar Combined Power Storage



Power Storage Mode



Emergency Power Discharge Mode

Night Power Storage Mode